

# Platter Separates

## Slip Ring Platter Separates

### Description

For space requirements, platter separates can be an ideal solution. The units supplied generally consist of a slip ring based on a PCB style and a matching brush block or board depending on the requirements. Various configurations are manufactured – from simple components, through units with fixed spacing arrangements to products with integrated bearing components.

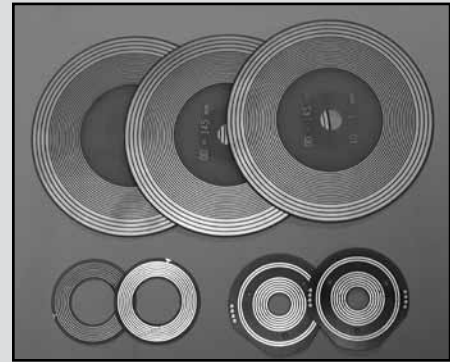
Full mounting details are supplied with the unit and the customer is required to lubricate the slip ring during installation.

### Features

- Separate components or integrated assemblies
- Simple installation
- Pre-set brush springs

### Benefits

- Suits applications with minimal available space
- Can utilize existing bearing system
- Custom configuration to suit application



### Typical Applications

- Process machinery
- Medical equipment
- Test and measurement equipment