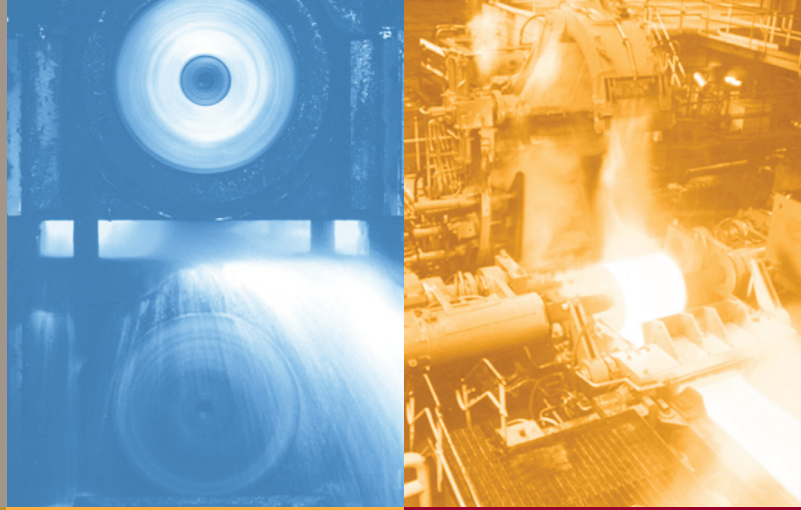


G128-809A

POWER SUPPLY



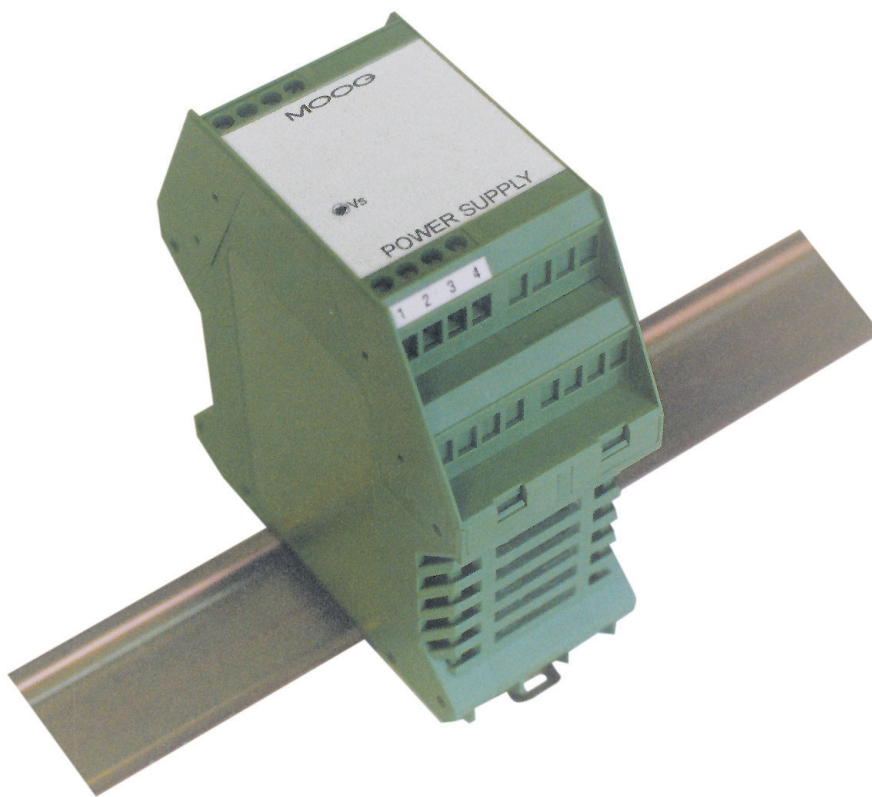
DESCRIPTION

The G128-809A Power Supply provides a regulated 24VDC output from an AC or DC input supply. The G128-809A is suitable for powering devices with a combined continuous current of up to 2.9A at 40°C.

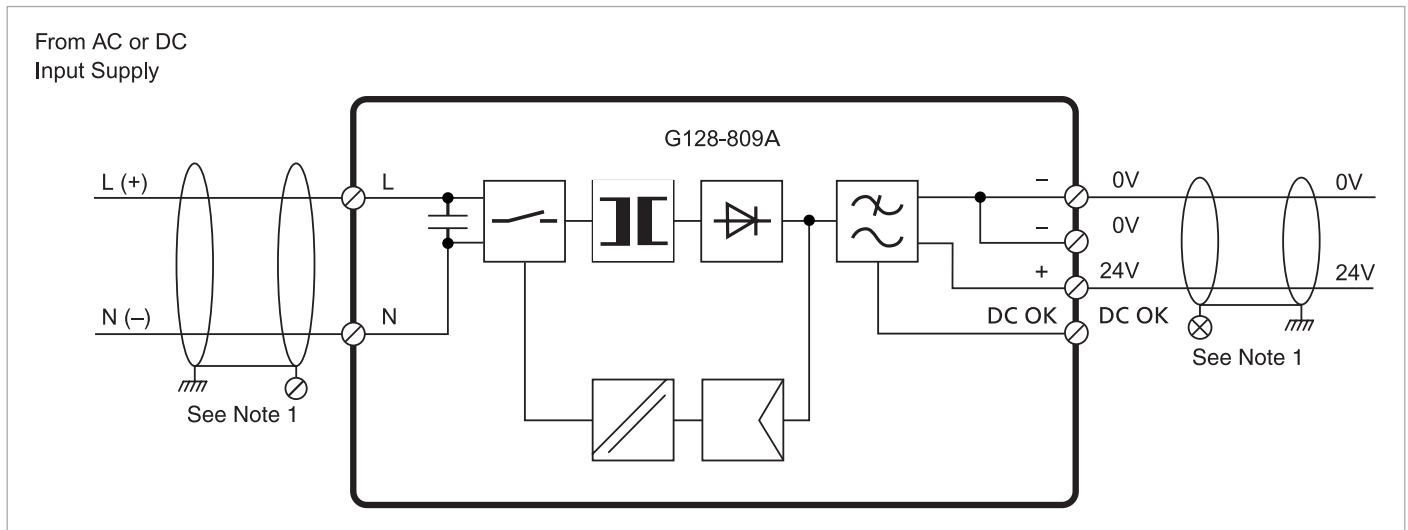
The Power Supply uses a high reliability and efficient switching regulator design and is housed in a compact DIN rail mounting enclosure.

FEATURES

- Wide range AC or DC input
- Regulated +24VDC low ripple output
- Idle proof and short circuit protected
- 4kV isolation from input supply
- High efficiency, >80%
- High reliability, 500,000 hour MTBF
- Parallel connectable for redundant operation
- Compact DIN housing
- CE marked



BLOCK WIRING DIAGRAM



Note 1: Connect cable screen to enclosure cable gland or chassis ground

SPECIFICATIONS

Nominal supply	100 to 240VAC, 45 to 65Hz. 90 to 350VDC.
Supply range	85 to 264VAC.
Inrush current	< 35A for < 3mS @ 25°C.
Internal input fuse	2.5A.
Optional external input circuit breaker	10A "B".
Isolation	4kV.
Mains buffering	> 20mS @ 120VAC. > 100mS @ 230VAC.
Output – voltage – current	24VDC fixed –0% / +3%. 2.9A max. @ $T_{amb} \leq 40^{\circ}\text{C}$. 2A max. @ $T_{amb} \leq 60^{\circ}\text{C}$.
Startup delay	< 100mS.
Ripple	100mV p-p typical at nominal load.
Load regulation	< 1% static for 10% to 90% load change. < 3% dynamic for 10% to 90% load change.

Maximum power loss	10W at nominal load.
Front panel indicator	Vs: Green power LED.
Mounting	DIN rail.
Protection type	IP 20.
Temperature	–25 to +60°C (see output current spec.).
Dimensions	100W x 108H x 45D.
Weight	250g.
Approvals	CE mark: EN50081.2 emission. EN61000-6-2 immunity.

Moog has offices around the world.
For more information or the office
nearest you, contact us online.

e-mail: info@moog.com

www.moog.com/industrial

Moog is a registered trademark of Moog Inc. and its subsidiaries. All trademarks as indicated herein are the property of Moog Inc. and its subsidiaries.
©2010 Moog Inc. All rights reserved. All changes are reserved.

DIN Power Supply
Moog Aust/PDF/0613

ORDERING INFORMATION

Power Supply G128-809A

This technical data is based on current available information and is subject to change at any time by Moog. Specifications for specific systems or applications may vary.

MOOG