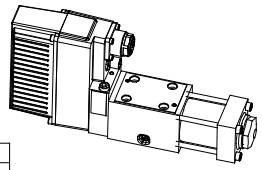
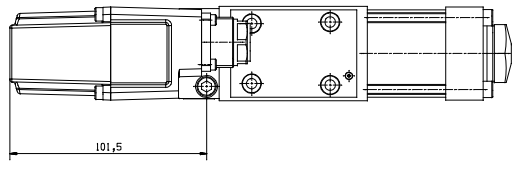
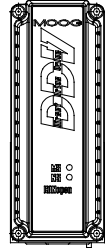
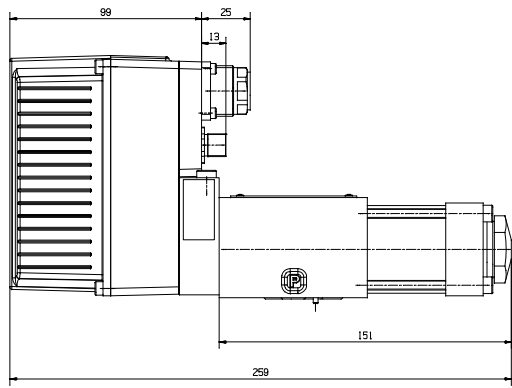
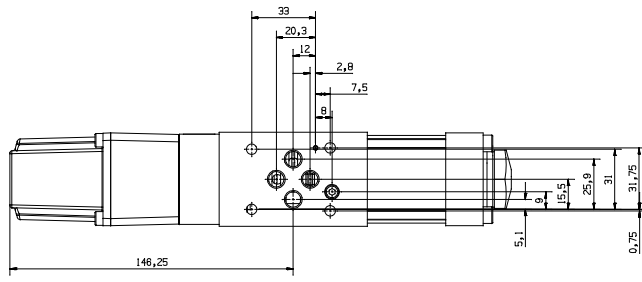
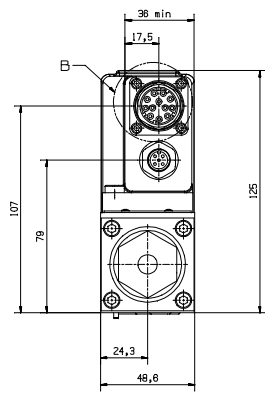


DETAIL B
M 211



TECHNICAL DATA

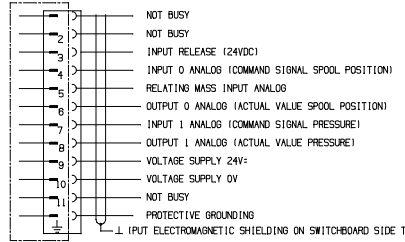
- OPERATING PRESSURE RANGE: MAX 350 bar (DEPENDING ON PRESSURE TRANSDUCER)
RETURN PRESSURE: MAX. 50 bar
- OPERATING FLUID: MINERAL OIL BASED HYDR.FLUID TO DIN 51524
PART 1-3 (ISO 6743 PART 4)
VISCOSITY 15 TO 45 mm²/s (cSt)
- FILTER RATING: #₁₀ ≥ 75 (10µm ABSOLUTE)
FOR LONGER LIFE: #₄ ≥ 75 (6µm ABSOLUTE)
RECOMMENDED CLEANLINESS CLASS: ISO 4408 < 15/12 (NAS 8/7)
FOR LONGER LIFE: ISO 4408 < 14/11 (NAS 6/5)
- TEMPERATURE RANGE: AMBIENT: -20° C TO +60° C
FLUID: -20° C TO +80° C
- SEAL MATERIAL: HNBR (FOR REQUEST FPM)
- BASE O-RINGS: MOOG P/N B97009-013 (4x) (ID9,24x1,78)
AND B97009-012 (1x) (ID7,65x1,78)
- MOUNTING SURFACE: NEEDS TO BE FLAT WITHIN 0,01mm R_a0,8µm (R_{max}<10)
- MOUNTING BOLTS: M5x95 EN ISO 4762-10.9 (NOT INCLUDED IN DELIVERY)
REQUIRED TORQUE 6,8 Nm
- RATED FLOW: 5 TO 40 l/min
Δ P_v = 70 bar
± 0,50 mm
- SPOOL STROKE: ±10V; ±10mA; 4...20mA; CAN
- RATED COMMAND: ±10V; ±10mA; 4...20mA; CAN
- HYDRAULIC FLOW: FLOW OUT OF PORT 'C2'(A) IF VALVE IS CONNECTED LIKE THIS:
- MATING CONNECTOR: MOOG P/N B97087-111 (FOR 11+PE) DIN EN 175201-804
- PROTECTION CLASS EN 60529: IP 65/67
- MASS: 2000 g

GENERAL REQUIREMENTS

ALL SIGNAL LINES, ALSO THOSE OF EXTERNAL TRANSDUCERS, SHIELDED. SHIELD CONNECTED RADIALY TO L10V1 POWER SUPPLY SIGS, AND CONNECTED TO THE MATING CONNECTOR HOUSING (M211).
ENCL MEETS THE REQUIREMENTS OF EN 5821/09.01 CLASS B, EN 50081-1/01.02 AND EN 50082-2/03.05, PERFORMANCE CRITERION CLASS A. PROTECTIVE GROUNDING LEAD ≥ 0,75 mm.
NOTES: WHEN MAKING ELECTRICAL CONNECTIONS TO THE VALVE, (EARTH) PROTECTIVE GROUNDING APPROPRIATE MEASURES MUST BE TAKEN TO ENSURE THAT LOCALLY DIFFERENT EARTH POTENTIALS DO NOT RESULT IN EXCESSIVE GROUND CURRENTS. SEE ALSO MOOG APPLICATION NOTE INSG 8.

11+PE PER EN 175201 PART 804

CAN



- 1 CAN-SHLD
- 2 CAN-V+
- 3 CAN-GND
- 4 CAN-H
- 5 CAN-L

No.	Description	Qty.	Part-No.	Material / Group	Dimension / Info.
None otherwise specified					
Referencing profile to DIN ISO 2768-01					
Tolerancing profile to DIN ISO 2768-01					
Dimension: ±0,1					
Surface quality: 3,2					
Chk in 3D file: 1/√1/√(6mm/30)					
Dimension: ±0,1					
Workpiece edges: 0,3					
to DIN 6709: 1/3					
2003 Date Name Date Name Title					
Desp. HUBB 220 Deskl. STANL RBU					
Check. STANL 1500 Exp. STANL BK					
Mfg. STANL MEA Norm. STANL BK					
Material STANL 8000 Exp.					
MOOG					
880696 Germany					
First use: C72222					
Drawing-No: C72222					
Title: ISOLATION DRAWING DIRECT DRIVE VALVE 11+PE p1/D					
This is a CAD drawing and must not be edited by hand.					