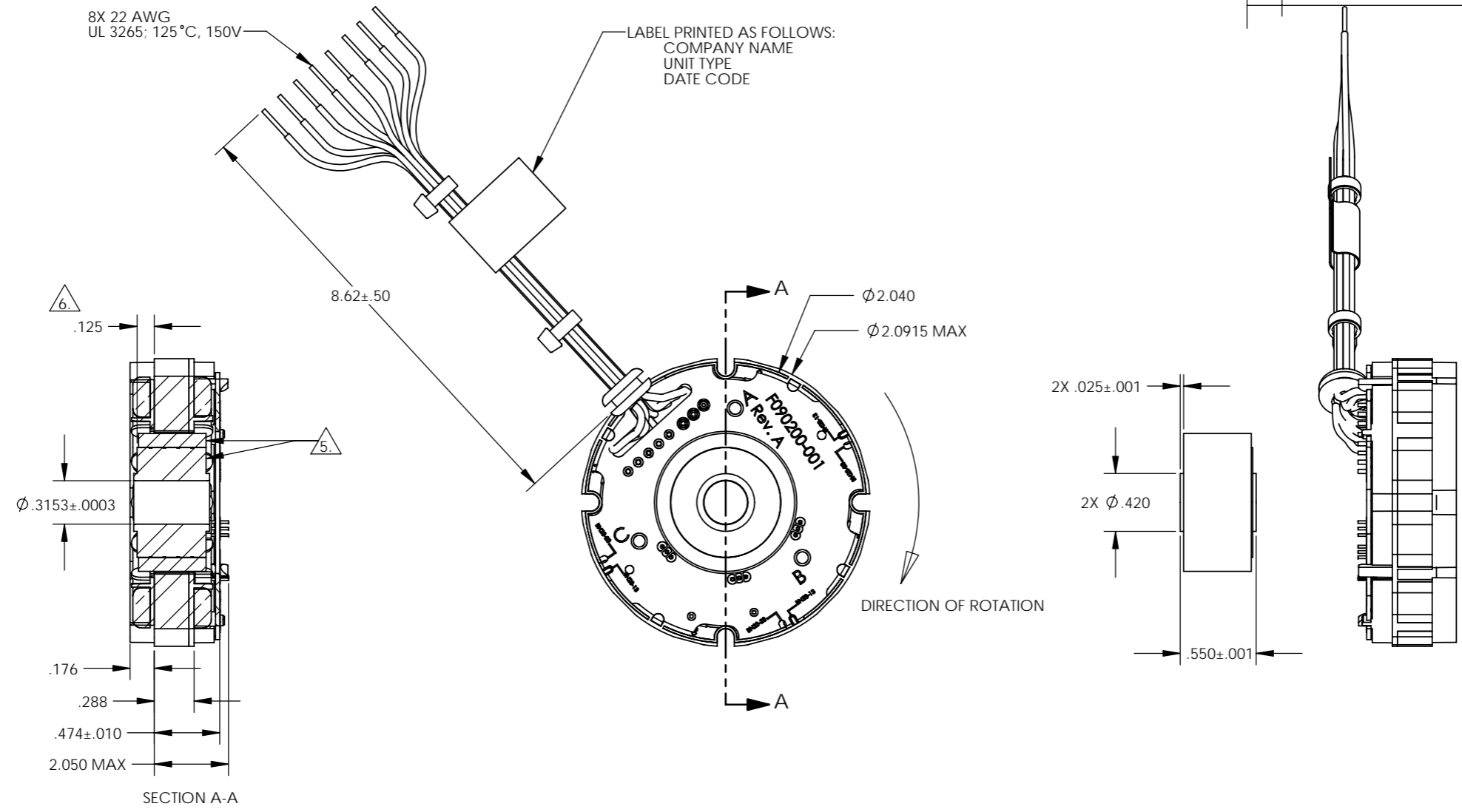


REVISIONS				
ZONE	REV.	DESCRIPTION	DATE	APPROVED
	A	NEW DRAWING/NTD 10172		

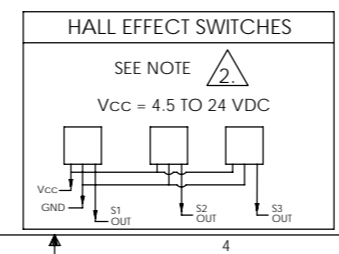
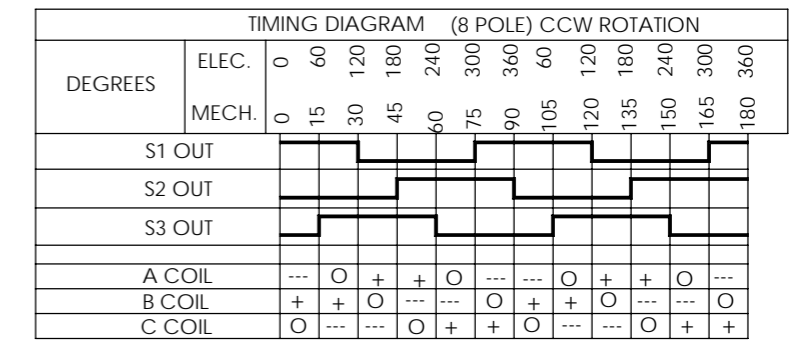


NOTES UNLESS OTHERWISE SPECIFIED:

1. INTERPRET DRAWING PER ASME Y14.100.
2. OPEN COLLECTOR OUTPUTS, USE PULL UP RESISTORS BETWEEN V<sub>CC</sub> AND OUTPUTS.
3. TESTED AS A MOTOR ASSEMBLY MOUNTED TO 6" X 6" X 1/4" ALUMINUM PLATE, STILL AIR.
4. MAXIMUM WINDING TEMPERATURE OF 155°C.
5. MAGNET RING AND ROTOR CORE: FLUSH ±.002 ON THIS SIDE.
6. RECOMENDED ROTOR CORE TO STACK MOUNTING DIMENSION.

PERFORMANCE AT 25°C				
PARAMETER	SYMBOL	UNITS	TOLERANCE	VALUE
TERMINAL VOLTAGE	V	VOLTS DC	NOMINAL	24
PEAK TORQUE	T <sub>P</sub>	OZ-IN	MAXIMUM	35
CONTINUOUS STALL TORQUE	T <sub>C</sub> <sup>1</sup>	OZ-IN	MAXIMUM	14.6
NO LOAD SPEED	S <sub>NL</sub>	RPM	NOMINAL	12200
RATED SPEED	S <sub>R</sub>	RPM		8650
RATED TORQUE		OZ-IN	MAXIMUM	14.2
RATED CURRENT		AMPS		5.80
RATED POWER		WATTS		91
TORQUE SENSITIVITY	K <sub>T</sub>	OZ-IN/AMP	±10%	2.55
BEMF CONSTANT	K <sub>E</sub>	VOLTS/KRPM	±10%	1.89
TERMINAL RESISTANCE	R <sub>M</sub>	OHMS	±12%	0.465
TERMINAL INDUCTANCE	L <sub>M</sub>	mH	±30%	0.350
MOTOR CONSTANT	K <sub>M</sub>	OZ-IN/? WATTS	NOMINAL	3.74
SPEED TORQUE GRADIENT		RPM/OZ-IN		250
MECHANICAL TIME CONSTANT		msec		5.20
ELECTRICAL TIME CONSTANT		msec		0.75
THERMAL RESISTIVITY		°C/WATT		2.28

TERMINATION TABLE	
COLOR	CONNECTION
VIOLET	A COIL
BLACK	B COIL
GREEN	C COIL
YELLOW	V <sub>CC</sub>
GREY	GROUND
BROWN	S1 OUT
BLUE	S2 OUT
WHITE	S3 OUT



UNLESS OTHERWISE SPECIFIED DIMENSIONS ARE IN INCHES		CAD GENERATED DRAWING, DO NOT MANUALLY UPDATE			
TOLERANCES ARE:		APPROVALS			
DECIMALS	±.010	ANGLES	±0°30'	BRUSHLESS D.C. MOTOR	
.XXX	±.005	FRACTIONS	±1/64	OUTLINE	
.XXXX	±.0005			DWG. NO. BN23-13ZMG-01LH	
DO NOT SCALE DRAWING		MATERIAL		CAGE CODE 4H618	
FINISH		SHOP ENGR		SCALE 1.5:1	
		QA		SHEET 1 OF 1	