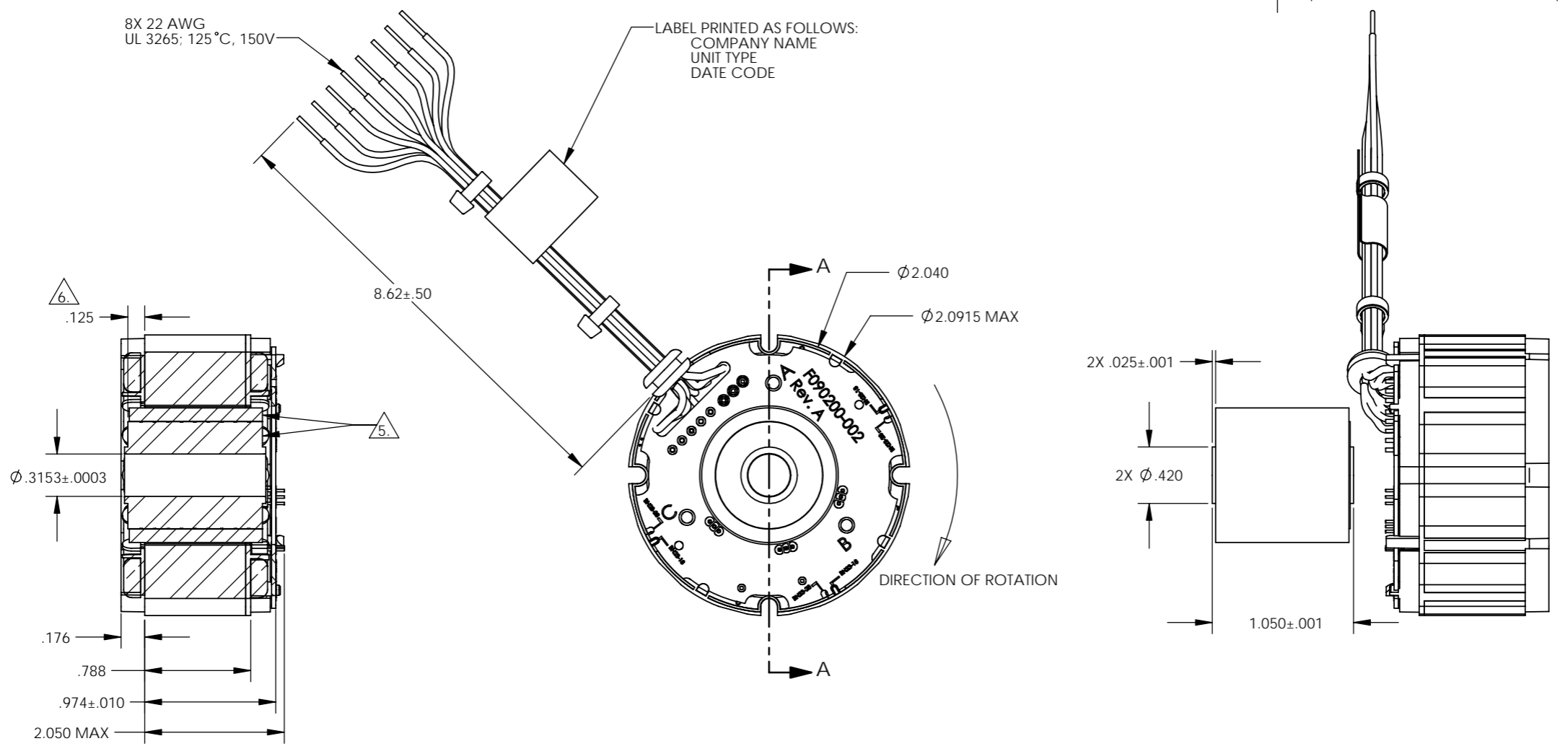


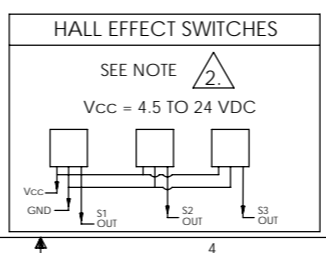
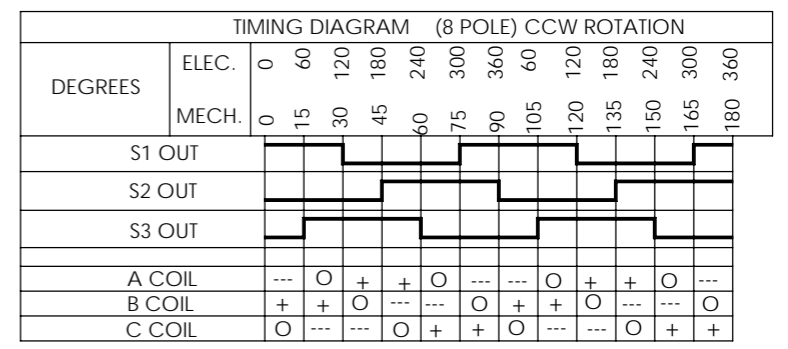
REVISIONS				
ZONE	REV.	DESCRIPTION	DATE	APPROVED
	A	NEW DRAWING/NTD 10176		



- NOTES UNLESS OTHERWISE SPECIFIED:
1. INTERPRET DRAWING PER ASME Y14.100.
 2. OPEN COLLECTOR OUTPUTS, USE PULL UP RESISTORS BETWEEN V_{CC} AND OUTPUTS.
 3. TESTED AS A MOTOR ASSEMBLY MOUNTED TO 6" X 6" X 1/4" ALUMINUM PLATE, STILL AIR.
 4. MAXIMUM WINDING TEMPERATURE OF 155°C.
 5. MAGNET RING AND ROTOR CORE: FLUSH ±.002 ON THIS SIDE.
 6. RECOMENDED ROTOR CORE TO STACK MOUNTING DIMENSION.

PERFORMANCE AT 25°C				
PARAMETER	SYMBOL	UNITS	TOLERANCE	VALUE
TERMINAL VOLTAGE	V	VOLTS DC	NOMINAL	36
PEAK TORQUE	T _P	OZ-IN	MAXIMUM	88
CONTINUOUS STALL TORQUE	T _C ¹	OZ-IN	MAXIMUM	31.4
NO LOAD SPEED	S _{NL}	RPM	NOMINAL	9700
RATED SPEED	S _R	RPM		7000
RATED TORQUE		OZ-IN	MAXIMUM	29.8
RATED CURRENT		AMPS		5.43
RATED POWER		WATTS		154
TORQUE SENSITIVITY	K _T	OZ-IN/AMP	±10%	4.90
BEMF CONSTANT	K _E	VOLTS/KRPM	±10%	3.62
TERMINAL RESISTANCE	R _M	OHMS	±12%	0.507
TERMINAL INDUCTANCE	L _M	mH	±30%	0.580
MOTOR CONSTANT	K _M	OZ-IN/? WATTS	NOMINAL	6.88
SPEED TORQUE GRADIENT		RPM/OZ-IN		90.6
MECHANICAL TIME CONSTANT		msec		3.00
ELECTRICAL TIME CONSTANT		msec		1.14
THERMAL RESISTIVITY		°C/WATT		2.67

TERMINATION TABLE	
COLOR	CONNECTION
VIOLET	A COIL
BLACK	B COIL
GREEN	C COIL
YELLOW	V _{CC}
GREY	GROUND
BROWN	S1 OUT
BLUE	S2 OUT
WHITE	S3 OUT



UNLESS OTHERWISE SPECIFIED DIMENSIONS ARE IN INCHES		CAD GENERATED DRAWING, DO NOT MANUALLY UPDATE			
TOLERANCES ARE:		APPROVALS			
DECIMALS ±.010	ANGLES ±0°30'	DRAWN R. PACE	DATE 1/31/06	BRUSHLESS D.C. MOTOR	
XXX ±.005	FRACTIONS ±1/64	CHECKED R. MARTIN	DATE 2/10/06	OUTLINE	
XXXX ±.0005		ENGR D. THOMPSON	DATE 2/10/06	SIZE C	CAGE CODE 4H618
DO NOT SCALE DRAWING		RELEASED R. MARTIN	DATE 2/14/06	DWG NO. BN23-18ZMG-02LH	
MATERIAL		MFG ENGR L. FORRISTER	DATE 2/13/06	SCALE 1.5:1	CAD FILE BN23-18ZMG-02LH
FINISH		SHOP ENGR	DATE	SHEET 1 OF 1	
		QA B. LITTLE	DATE 2/10/06		