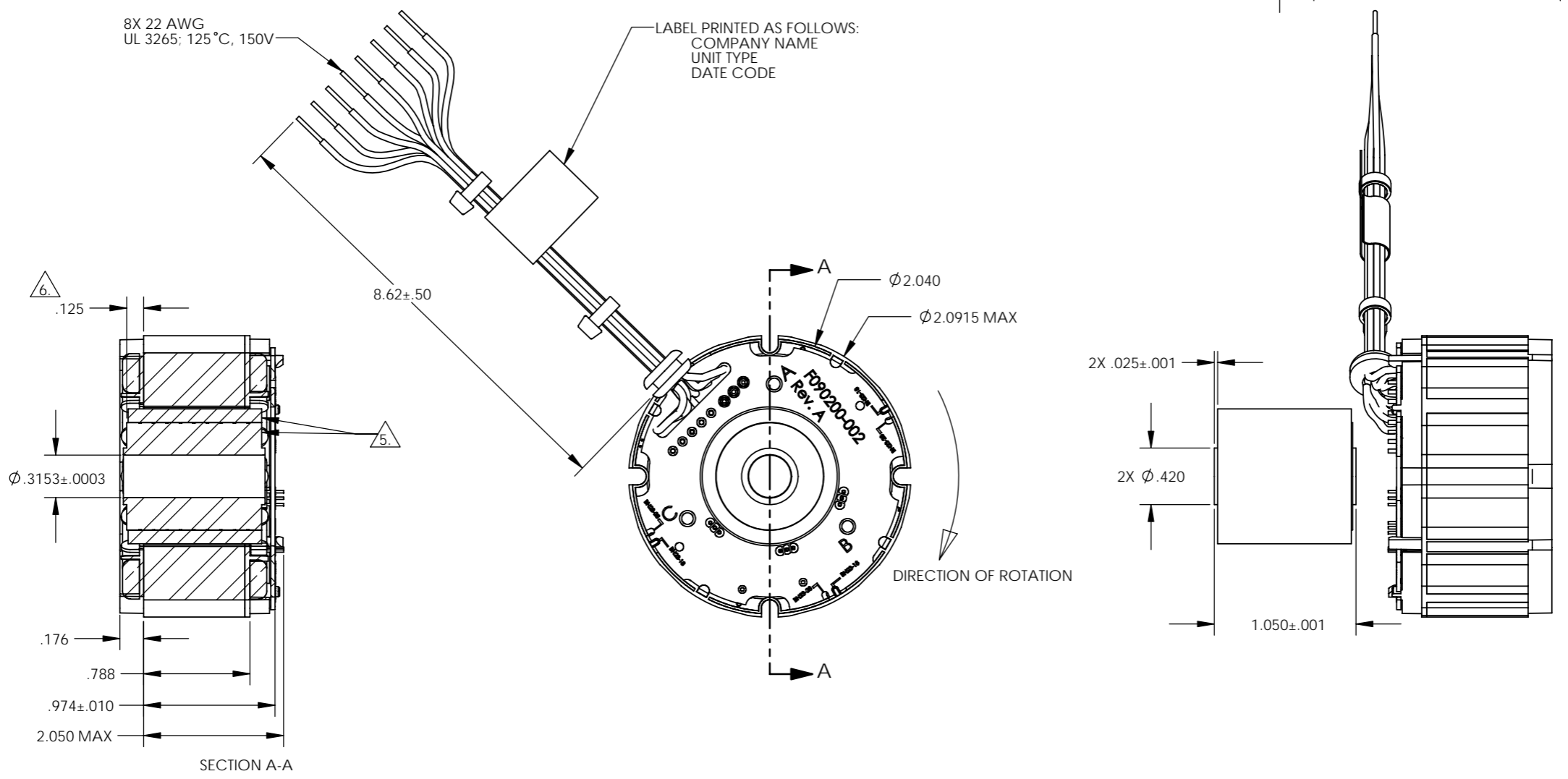


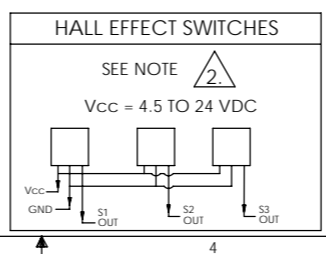
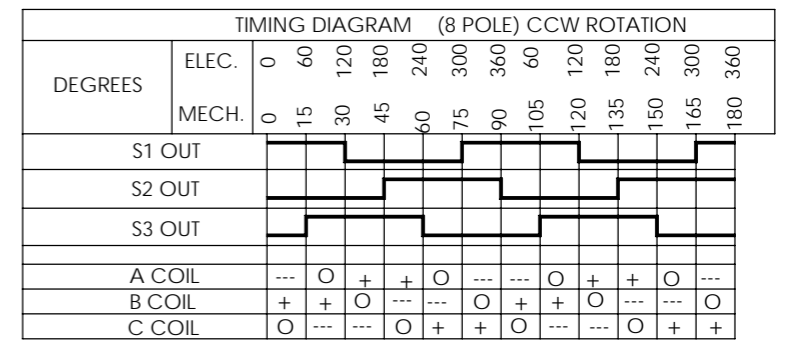
REVISIONS				
ZONE	REV.	DESCRIPTION	DATE	APPROVED
	A	NEW DRAWING/NTD 10177		



- NOTES UNLESS OTHERWISE SPECIFIED:
1. INTERPRET DRAWING PER ASME Y14.100.
  2. OPEN COLLECTOR OUTPUTS, USE PULL UP RESISTORS BETWEEN V<sub>CC</sub> AND OUTPUTS.
  3. TESTED AS A MOTOR ASSEMBLY MOUNTED TO 6" X 6" X 1/4" ALUMINUM PLATE, STILL AIR.
  4. MAXIMUM WINDING TEMPERATURE OF 155°C.
  5. MAGNET RING AND ROTOR CORE: FLUSH ±.002 ON THIS SIDE.
  6. RECOMENDED ROTOR CORE TO STACK MOUNTING DIMENSION.

PERFORMANCE AT 25°C				
PARAMETER	SYMBOL	UNITS	TOLERANCE	VALUE
TERMINAL VOLTAGE	V	VOLTS DC	NOMINAL	48
PEAK TORQUE	T <sub>P</sub>	OZ-IN	MAXIMUM	88
CONTINUOUS STALL TORQUE	T <sub>C</sub> <sup>1</sup>	OZ-IN	MAXIMUM	35.2
NO LOAD SPEED	S <sub>NL</sub>	RPM	NOMINAL	10200
RATED SPEED	S <sub>R</sub>	RPM		7130
RATED TORQUE		OZ-IN	MAXIMUM	32.9
RATED CURRENT		AMPS		4.88
RATED POWER		WATTS		174
TORQUE SENSITIVITY	K <sub>T</sub>	OZ-IN/AMP	±10%	6.25
BEMF CONSTANT	K <sub>E</sub>	VOLTS/KRPM	±10%	4.62
TERMINAL RESISTANCE	R <sub>M</sub>	OHMS	±12%	0.800
TERMINAL INDUCTANCE	L <sub>M</sub>	mH	±30%	0.930
MOTOR CONSTANT	K <sub>M</sub>	OZ-IN/? WATTS	NOMINAL	6.99
SPEED TORQUE GRADIENT		RPM/OZ-IN		93.30
MECHANICAL TIME CONSTANT		msec		2.90
ELECTRICAL TIME CONSTANT		msec		1.16
THERMAL RESISTIVITY		°C/WATT		1.81

TERMINATION TABLE	
COLOR	CONNECTION
VIOLET	A COIL
BLACK	B COIL
GREEN	C COIL
YELLOW	V <sub>CC</sub>
GREY	GROUND
BROWN	S1 OUT
BLUE	S2 OUT
WHITE	S3 OUT



UNLESS OTHERWISE SPECIFIED DIMENSIONS ARE IN INCHES TOLERANCES ARE: DECIMALS .XX ±.010 .XXX ±.005 .XXXX ±.0005 ANGLES ±0°30' FRACTIONS ±1/64		CAD GENERATED DRAWING, DO NOT MANUALLY UPDATE				TITLE	
DO NOT SCALE DRAWING		APPROVALS				BRUSHLESS D.C. MOTOR	
MATERIAL		DRAWN R. PACE 1/31/06		CAGE CODE		DWG. NO. BN23-18ZMG-03LH	
FINISH		CHECKED R. MARTIN 2/10/06		SCALE		SHEET 1 OF 1	
		ENGR D. THOMPSON 2/10/06		1.5:1		CAB. FILE BN23-18ZMG-03LH	
		RELEASED R. MARTIN 2/14/06					
		MFG ENGR L. FORRISTER 2/13/06					
		SHOP ENGR					
		QA B. LITTLE 2/10/06					