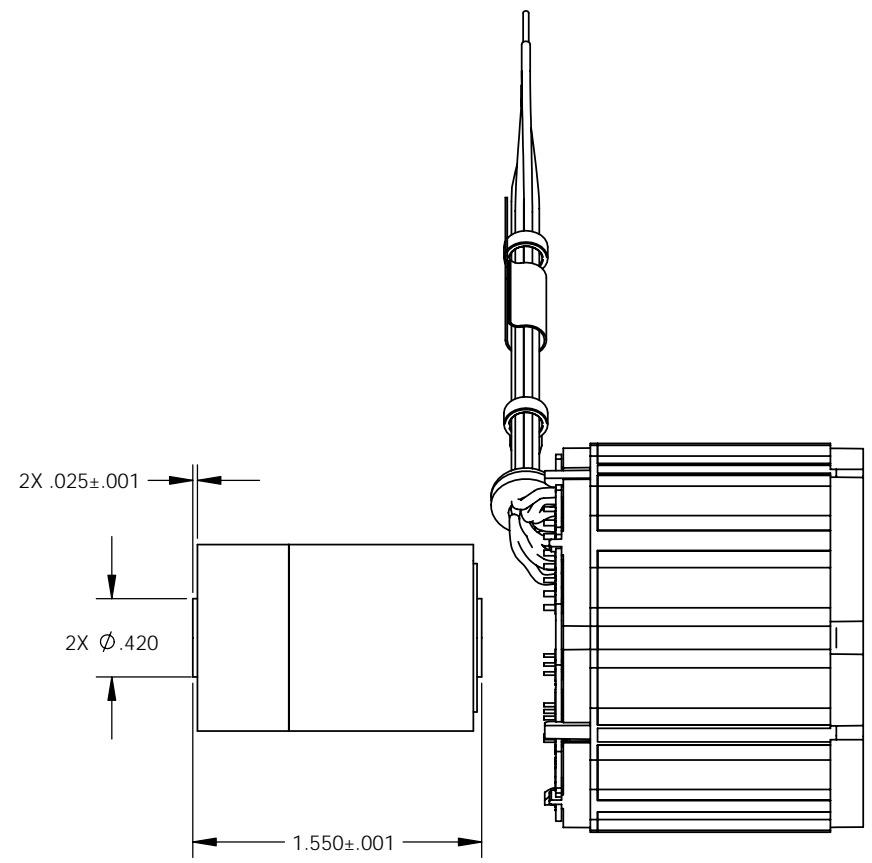
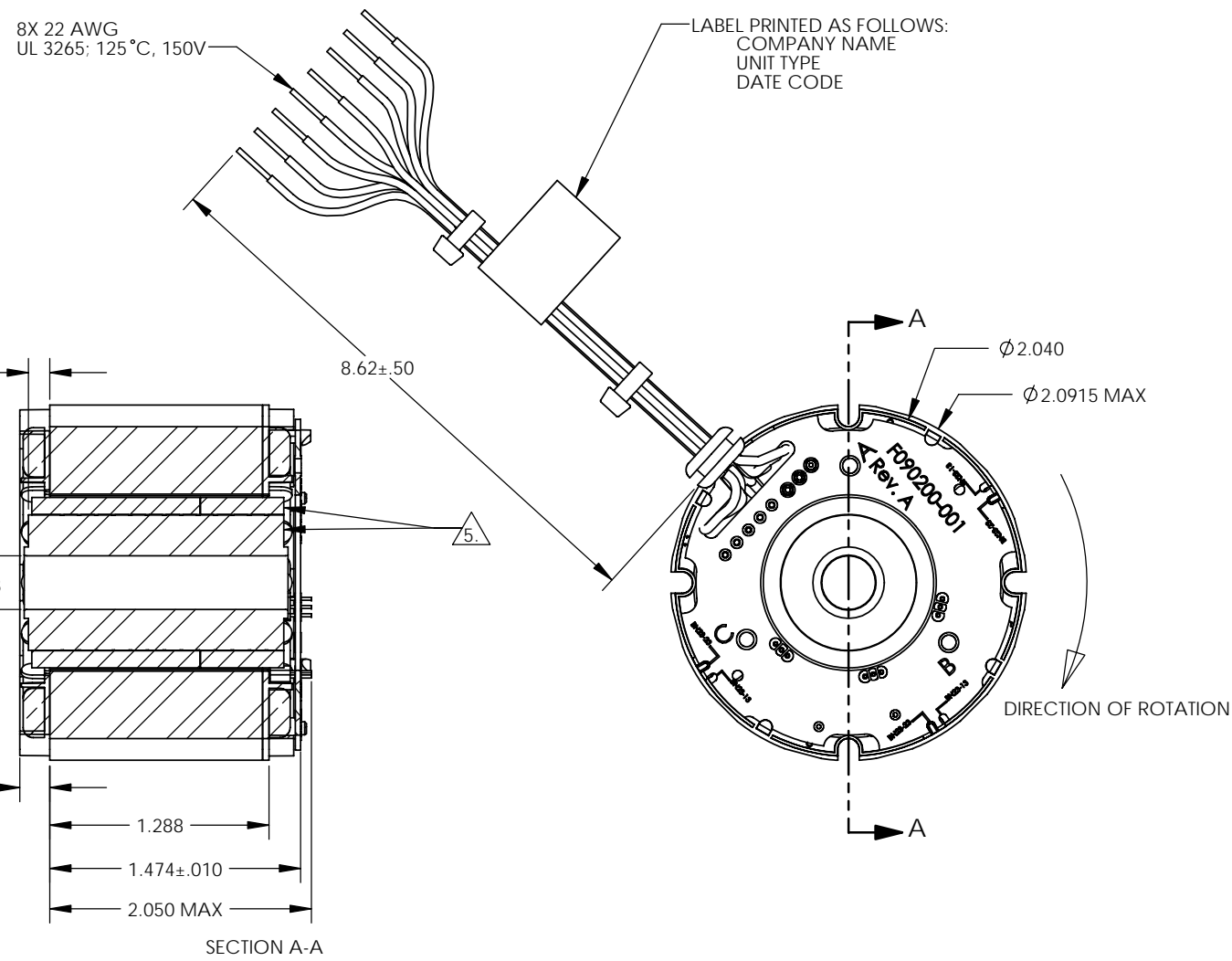
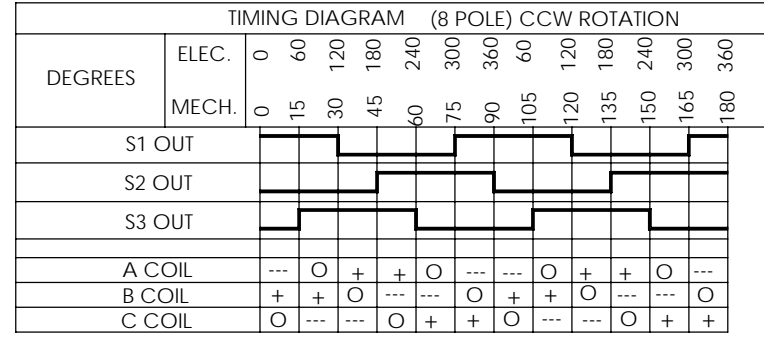


REVISIONS				
ZONE	REV.	DESCRIPTION	DATE	APPROVED
	A	NEW DRAWING/NTD 10179		

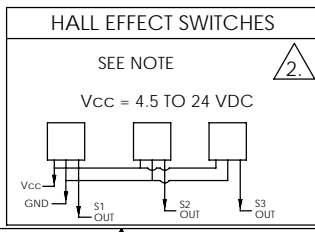


- NOTES UNLESS OTHERWISE SPECIFIED:
1. INTERPRET DRAWING PER ASME Y14.100.
 2. OPEN COLLECTOR OUTPUTS, USE PULL UP RESISTORS BETWEEN V_{CC} AND OUTPUTS.
 3. TESTED AS A MOTOR ASSEMBLY MOUNTED TO 6" X 6" X 1/4" ALUMINUM PLATE, STILL AIR.
 4. MAXIMUM WINDING TEMPERATURE OF 155 °C.
 5. MAGNET RING AND ROTOR CORE: FLUSH ±.002 ON THIS SIDE.
 6. RECOMENDED ROTOR CORE TO STACK MOUNTING DIMENSION.

TERMINATION TABLE	
COLOR	CONNECTION
VIOLET	A COIL
BLACK	B COIL
GREEN	C COIL
YELLOW	V _{CC}
GREY	GROUND
BROWN	S1 OUT
BLUE	S2 OUT
WHITE	S3 OUT



PERFORMANCE AT 25°C				
PARAMETER	SYMBOL	UNITS	TOLERANCE	VALUE
TERMINAL VOLTAGE	V	VOLTS DC	NOMINAL	36
PEAK TORQUE	T _P	OZ-IN	MAXIMUM	143
CONTINUOUS STALL TORQUE	T _C ¹	OZ-IN	MAXIMUM	44.7
NO LOAD SPEED	S _{NL}	RPM	NOMINAL	8800
RATED SPEED	S _R	RPM		6700
RATED TORQUE		OZ-IN	MAXIMUM	42.3
RATED CURRENT		AMPS		7.44
RATED POWER		WATTS		210
TORQUE SENSITIVITY	K _T	OZ-IN/AMP	±10%	5.35
BEMF CONSTANT	K _E	VOLTS/KRPM	±10%	3.96
TERMINAL RESISTANCE	R _M	OHMS	±12%	0.347
TERMINAL INDUCTANCE	L _M	mH	±30%	0.420
MOTOR CONSTANT	K _M	OZ-IN/√ WATTS	NOMINAL	9.08
SPEED TORQUE GRADIENT		RPM/OZ-IN		49.60
MECHANICAL TIME CONSTANT		msec		2.60
ELECTRICAL TIME CONSTANT		msec		1.21
THERMAL RESISTIVITY		°C/WATT		1.89



UNLESS OTHERWISE SPECIFIED DIMENSIONS ARE IN INCHES		CAD GENERATED DRAWING, DO NOT MANUALLY UPDATE			
TOLERANCES ARE:		APPROVALS			
DECIMALS	ANGLES	DRAWN		1/31/06	
.XX ±.010	±0°30'	CHECKED		2/10/06	
.XXX ±.005	FRACTIONS	ENGR		2/10/06	
.XXXX ±.0005	±1/64	RELEASED		2/14/06	
DO NOT SCALE DRAWING		MFG ENGR		2/13/06	
MATERIAL		SHOP ENGR			
FINISH		CA		2/10/06	
TITLE		CAGE CODE		DWG. NO.	
BRUSHLESS D.C. MOTOR		4H618		BN23-23ZMG-02LH	
OUTLINE		SCALE		SHEET 1 OF 1	
		1.5:1		BN23-23ZMG-02LH	